

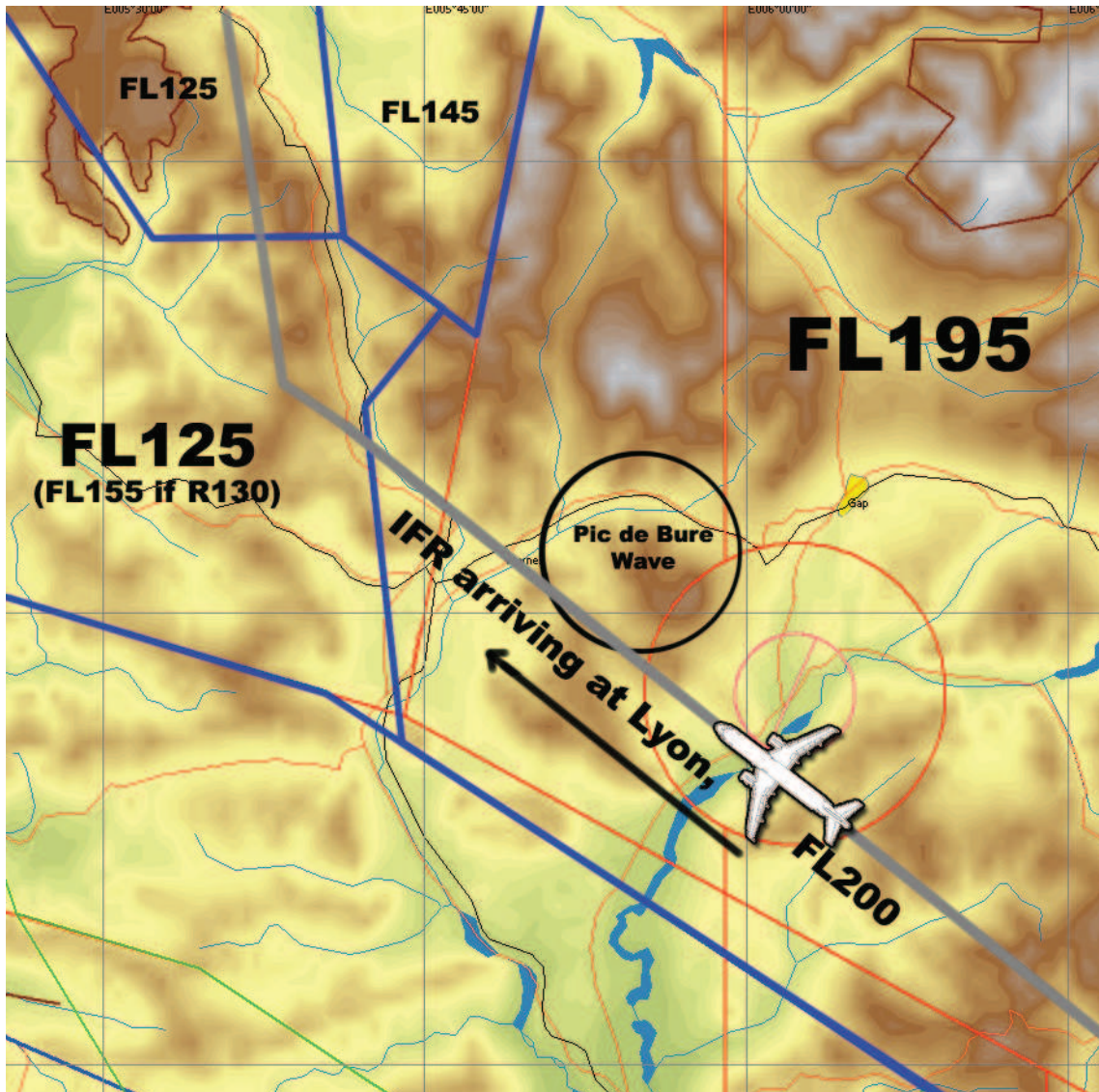


SECURITY FLASH

The wave lift from the Pic de Bure is located in the “Alpes” LTA, in the vicinity of a very busy commercial route for airliners arriving at Lyon St Exupery. Those jets can be flying as low as FL200.

As a matter of security, we ask you to

STOP CLIMB AT 5800 m MAXIMUM



This limitation is intended as a **security margin** to avoid unwanted infringements above FL195.

If you need to achieve your 5000m goal, you can either use :

- below FL195 : R130 A,B,C or other parts of Alpes LTA
- above FL195 : R180 (Lure) ou R173 (Fayence). Ask about the procedure.

Always check the altitude value in meters of FL195 **before Take-Off**.

Always use your airbrakes when necessary.